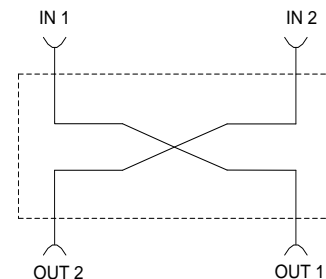
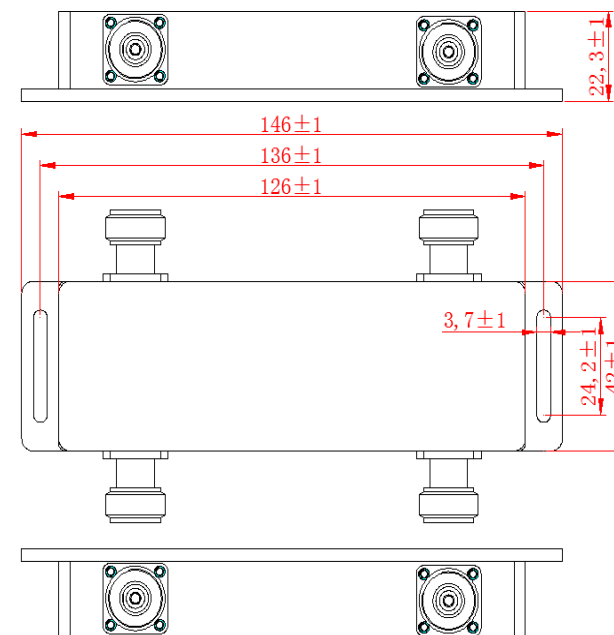


Type No.	95.00029	
Electrical		
Port		
Frequency (MHz)	698-2500	2500-2700
Insertion Loss (dB)	≤ 3.5	≤ 3.6
Isolation (dB)	≥ 25	
VSWR	≤ 1.3:1	
Impedance	50 Ω	
Input Power (c.w./per port)	≤ 200 Watts	
Intermodulation Products	≤ -150 dBc (3 <sup>rd</sup> order with 2x20W)	
Environmental		
Temperature Range	-20 to +55 °C (Operating)	
Humidity	95% max, non condensing	
Application	Indoor, IP40	
Mechanical		
Connectors	N female	
Colors	Black (Painting)	
Weight	≤ 0.4 kg	
Dimensions	126*24.2*22.3mm	
Packing	1 pc/box	

**Schematic diagram**



**Outline drawing**



**Product picture**

